

In Our Element:
Encounters
with the Coast

30 June - 12 August 2023

GALLAGHER & TURNER

30 St Mary's Place, Newcastle upon Tyne, NE1 7PQ
0191 261 4465 gallery@gallagherandturner.co.uk www.gallagherandturner.co.uk

In Our Element: Encounters with the Coast

This group exhibition brings together artworks from eight artists, celebrating the beauty and awe of the English Coastline. Artists include Ruth Bond, Andrew Cheetham, Melvyn Evans, Crispian Heath, Maria Laffey, Sarah Ross-Thompson, Kelly Stewart & Nicola Young.

We all hold personal memories of these wild and windswept encounters with the coast, weekend jaunts to Bamburgh, staring out to sea. Through paint, print and glass, these artists work from imagination and observation to create wonderfully poetic and atmospheric images of these dramatic, iconic, and familiar landscapes. This is a show that hopes to encapsulate these memorable encounters and the feeling of being by the sea.

All works for sale are available via our online store at www.gallagherandturner.co.uk



We are pleased to be able to offer the Own Art scheme, allowing you to spread the cost of buying great contemporary art by living artists.

Own Art is supported by Arts Council England, and allows buyers to borrow from £100 up to £25,000 over ten months interest-free (representative 0% APR). This can be used to purchase one or multiple works of art, or put towards the cost of a more expensive artwork, and lets you split up the cost of your purchase into ten more affordable, monthly payments.

Gallagher & Turner offer Own Art as a purchase method on almost all work by living artists. Get in touch or visit our gallery to find out how to use it, but note that some identifying documents may be required to process an application, so please check with us in advance of an Own Art purchase.

Framed Work

Ruth Bond

Born in Zambia, Ruth trained in fashion and built an award-winning interior design business in Newcastle. Having worked and travelled in many countries across the globe, she now works happily in her studio in Newcastle Arts Centre, painting in oils, always from experience of the countryside she loves – the Northumbrian coast, and the very special Outer Hebrides.



Ruth Bond

Lost in Thought

30 x 40 inches, unframed

£1700 SOLD

Limited Edition giclee print, £110 (mounted, unframed)

Ruth Bond
Haar, Cullernose Point
Oil on canvas, 60 x 60 cm
£1700 Framed (unglazed)
Limited Edition giclee print, £110 (mounted, unframed)



Ruth Bond
Acres of Secrets, Bamburgh House
Oil on canvas, 24 x 30 inches
£1700 Framed (unglazed)
Limited Edition giclee print, £110 (mounted, unframed)



Ruth Bond
Pendulum of Tide, Holy Island
Oil on canvas, 50 x 50cm
£1800 Framed with anti-reflective glass
Limited Edition giclee print, £110 (mounted, unframed)



Andrew Cheetham

Born in Heywood, Manchester, and based in Scarborough, North Yorkshire, Andrew Cheetham produces paintings and drawings of seascapes and landscapes. Until recently, he was based in a baiting shed on Scarborough harbour from where he documented the declining Fishing Industry. His work is held in Public Galleries and private collections.

Andrew Cheetham,
Sea Swell
Oil & Wax on board, 24 x 24 cm, 2023
£300 Framed



Andrew Cheetham,
Heavy Sea
Oil & Wax on board, 24 x 24 cm, 2023
£300 Framed



Andrew Cheetham,
Fret
Oil & Graphite on board, 33.5 x 36cm, 2017
£340 Framed



Melvyn Evans

Melvyn Evans references British Modernism of the 1950s, whilst bringing a contemporary illustrative twist. He seeks to capture a human relationship with the varied landscapes of the British Isles. Initially trained as a marine engineer, he studied illustration at Exeter College of Art and Design and Goldsmiths, and drawing at the Royal College of Art. He became a professional artist, printmaker and illustrator in 1992. His work has been widely exhibited throughout the UK, including at the Royal Academy, the Royal College of Art and Somerset House.



Melvyn Evans
Passing the Stack Rock
Linocut, ed. of 60, 40 x 50cm (image)
£380 Framed



Melvyn Evans
Fish on the Quay
Linocut, ed. of 60, 40 x 50cm
£380 Framed

Melvyn Evans
Sun and moon boats
Oil on canvas board, 40 x 50cm
£1290 Framed



Maria Laffey

Maria Laffey, born in Hartlepool, is a painter working in oils and watercolour. She often works outdoors 'en plein air' in all weathers immersed in the landscape. Her studio is based in rural Southwest Northumberland and she also paints from a studio in a static caravan situated in the Scottish Borders on the Berwickshire coast. She has exhibited with the Royal Society of British Artists (RBA) at the Mall Galleries London. Maria is also a co founder of Plein Air North East, a convivial collective of outdoor painters who meet regularly to paint together in the North East landscape.

Maria Laffey
Cove Harbour
Oil on board, 40 x 30cm
£480 Framed



Maria Laffey
April on the Berwickshire Coast
Oil on board, 40 x 30cm
£480 Framed



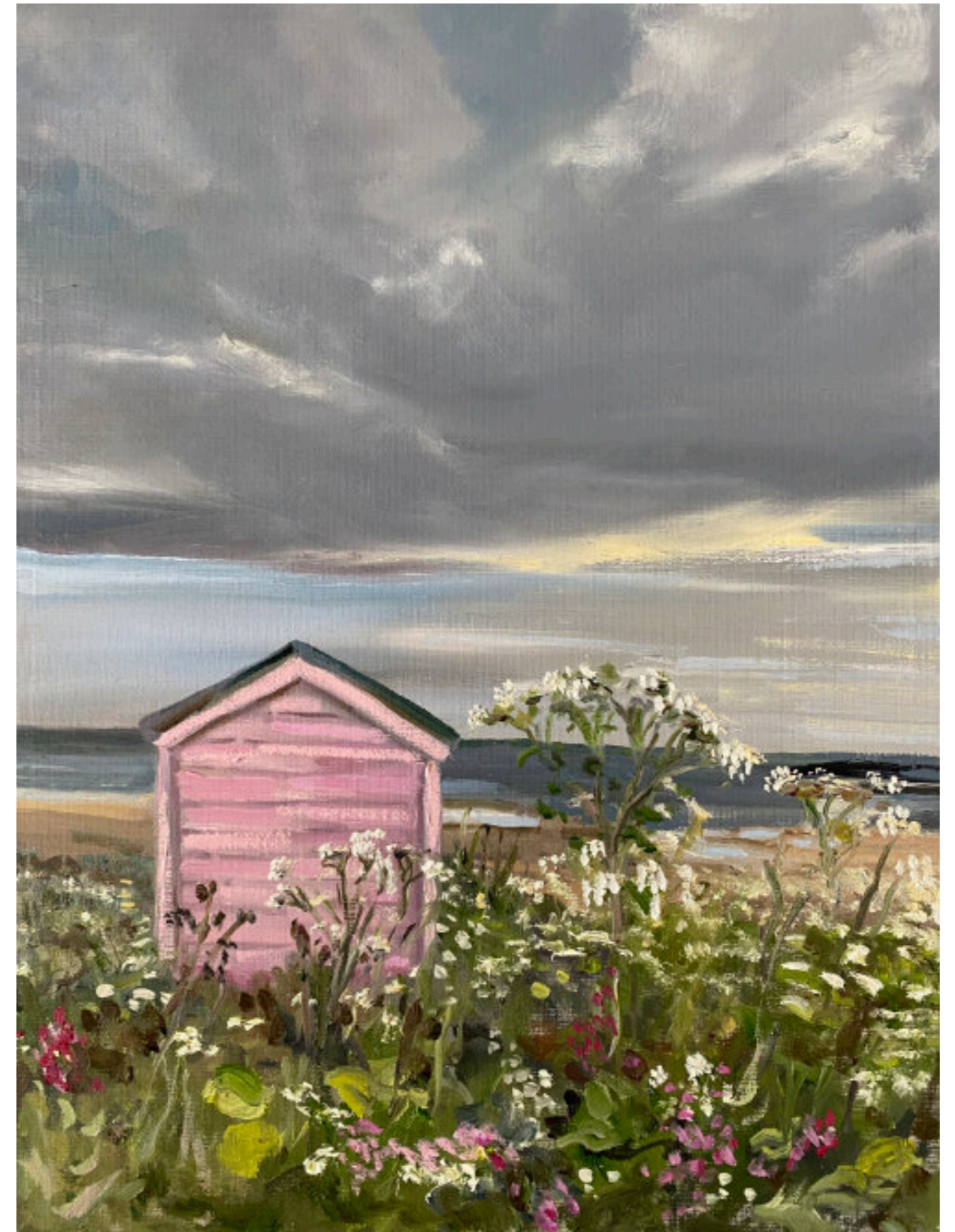


Maria Laffey
Surfers at Coldingham Bay
Oil on board, 30 x 40cm
£480 Framed

Maria Laffey
St. Abbs at Low Tide
Oil on board, 30 x 40cm
£480 Framed



Maria Laffey
Mid Summer at Coldingham Bay
Oil on board, 40 x 30cm
£480 Framed



Sarah Ross-Thompson

Sarah Ross-Thompson is a Fine Art Printmaker based on the Southwest Coast of Scotland looking out over the Irish Sea towards Belfast. She specialises in hand-inked, collagraph prints, constructed using materials such as string, salt, corrugated card, porridge oats and lichen. Having lived in some of the most beautiful parts of Britain, she draws inspiration from the breath-taking scenery surrounding her.

Sarah Ross-Thompson
Black Beauty
Collagraph on paper, 24 x 24cm, Edition 5/30
£90 Framed



Sarah Ross-Thompson
Through the Gap
Collagraph on paper, 40 x 40cm, Edition 7/30
£160 Framed SOLD



Sarah Ross-Thompson
Diving
Collagraph on paper, 40 x 40cm, Edition 11/30
£160 Framed



Sarah Ross-Thompson
Moon Magic
Collagraph on paper, 24 x 24cm, Edition 24/30
£90 Framed



Sarah Ross-Thompson
The Shifting Sands
Collagraph on paper, 56 x 56cm, Edition 28/30
£350 Framed SOLD



Sarah Ross-Thompson
Galloway Sunrise
Collagraph on paper, 56 x 56cm, Edition 3/30
£350 Framed



Sarah Ross-Thompson
Heron Flight
Collagraph on paper, 40 x 40cm, Edition 11/30
£160 Framed



Nicola Young

Based in Cullercoats, Nicola Young's paintings capture the essence of the coastline and its ever-changing beauty. Painting primarily abstract, non-objective works, each is an exploration of the balance between chaos and order, the unpredictable and the rhythmic and the relationship between the natural world and the man-made. Her work reflects a blending of imagination and emotion with memories and real-life experiences. After a successful career in Marketing, Nicola returned to painting ten years ago. Her work has been exhibited at the Royal Academy, London and the Mall Galleries.

Nicola Young
The Shallows
Mixed Media on wood, 60 x 60cm
£995 Framed



Nicola Young
Shipping Lines
Mixed Media on wood, 60 x 60cm
£995 Framed



Nicola Young
Harbour Watch
Mixed Media on wood, 60 x 60cm
£995 Framed



Nicola Young
Rockpools and Reflections
Mixed Media on wood, 50.5 x 40.5cm
£690 Framed



Sculpture

Crispian Heath

Based in North Shields, Crispian Heath is a glass artist whose inspiration stems from a passion for exploring the cliffs and geological sites of Britain.

Simultaneously rugged and highly polished, his glass works refract and reflect light, changing throughout the day. He has had work exhibited at the National Glass Centre, Sunderland; Ovengevornd Glas, Netherlands; and the British Glass Biennale, as well as participating in shows in London, Glasgow, York, Newcastle and more. His work is held in private collections across the UK and USA.

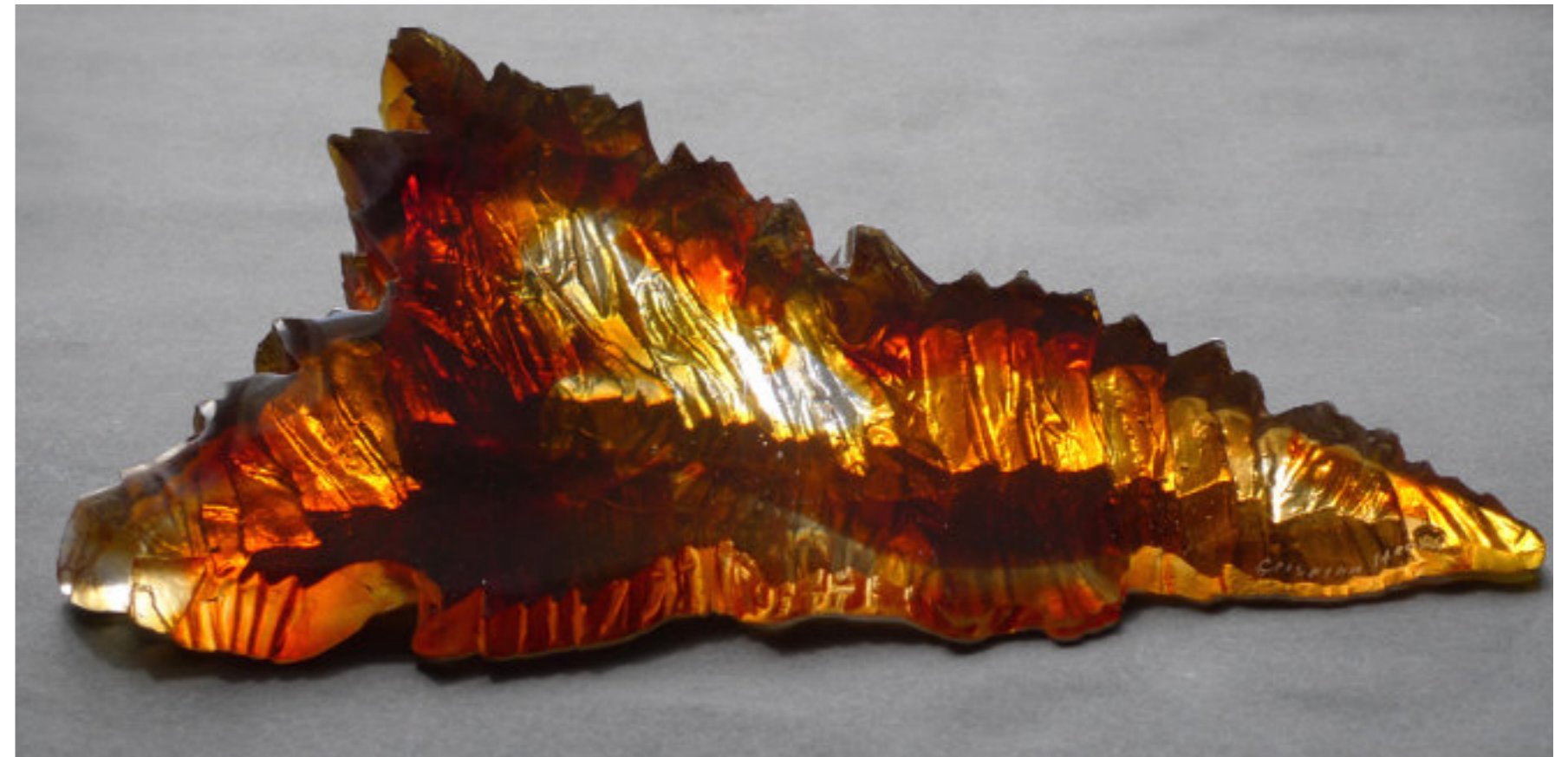


Crispian Heath

Orkney

Cast polychrome glass, 9 x 45 x 24cm

£1350



Crispian Heath
Amber Island
Cast polychrome glass, 9 x 35 x 19cm
£1060

Crispian Heath
Whitley Bay Sandstone
Cast polychrome glass, 7 x 33 x 14cm
£1540



Crispian Heath
Grey Cliff
Cast polychrome glass, 38 x 19 x 14cm
£1540



Crispian Heath
Small Cliff
Cast polychrome glass, 18 x 22 x 6cm
£480 SOLD



Crispian Heath
Cliff Face V
Cast polychrome glass, 36 x 17 x 13cm
£1540



Crispian Heath
Cliff Face VI
Cast polychrome glass, 38 x 18 x 11cm
£1540



Crispian Heath
Curved Cliff Edge
Cast polychrome glass, 27 x 15 x 8cm
£820



Mounted Work

Kelly Stewart

Kelly Stewart is an illustrator and printmaker, born in Australia and based in Edinburgh. In 2001 she joined Edinburgh Printmakers Workshop and began to translate the drawings of architecture into screenprint. For Kelly, screenprinting offers endless possibilities through overlaying images, mark making, handwritten text, texture and found imagery, creating images that otherwise wouldn't be possible with traditional painting materials such as acrylic and watercolour.



Kelly Stewart

View to Piel Island

Screen print, 56 x 38 cm, Edition 18/20

£ 195 Mounted



Kelly Stewart
Kirkcudbright Harbour
Screen print, 56 x 38 cm, Edition 20/25
£ 195 Mounted



Kelly Stewart
Morecombe Bay from Arnside
Screen print, 36.5 x 98 cm, Edition 7/12
£ 350 Mounted



Kelly Stewart
Shipwrecked on Morecambe Bay
Screen print, 38 x 56cm, Edition 5/15
£125 Mounted



Kelly Stewart
Steps to Mumbles Road II
Screen print, 38 x 57 cm
£125 Mounted

Melvyn Evans

Melvyn Evans references British Modernism of the 1950s, whilst bringing a contemporary illustrative twist. He seeks to capture a human relationship with the varied landscapes of the British Isles. Initially trained as a marine engineer, he studied illustration at Exeter College of Art and Design and Goldsmiths, and drawing at the Royal College of Art. He became a professional artist, printmaker and illustrator in 1992. His work has been widely exhibited throughout the UK, including at the Royal Academy, the Royal College of Art and Somerset House.



Melvyn Evans
Three Sentinels
Linocut, ed. of 60, 40 x 50cm
£250 Mounted



Melvyn Evans
A Busy Harbour
Linocut, ed. of 60, 40 x 50cm
£250 Mounted



Melvyn Evans
Boats, Church and Lighthouse
Linocut, ed. of 60, 40 x 50cm
£250 Mounted

Melvyn Evans
Casting Off
Linocut, ed. of 60, 40 x 50cm
£250 Mounted



Sarah Ross-Thompson

Sarah Ross-Thompson is a Fine Art Printmaker based on the Southwest Coast of Scotland looking out over the Irish Sea towards Belfast. She specialises in hand-inked, collagraph prints, constructed using materials such as string, salt, corrugated card, porridge oats and lichen. Having lived in some of the most beautiful parts of Britain, she draws inspiration from the breath-taking scenery surrounding her.

Sarah Ross-Thompson
A Gossip of Gannets
Collagraph, 40 x 40cm, edition 18/30
£110 Mounted



Sarah Ross-Thompson
Farewell
Collagraph, 24 x 24 cm, edition 3/30
£50 Mounted



Sarah Ross-Thompson
Bobbing Along
Collagraph, 24 x 24 cm, edition 4/30
£50 Mounted



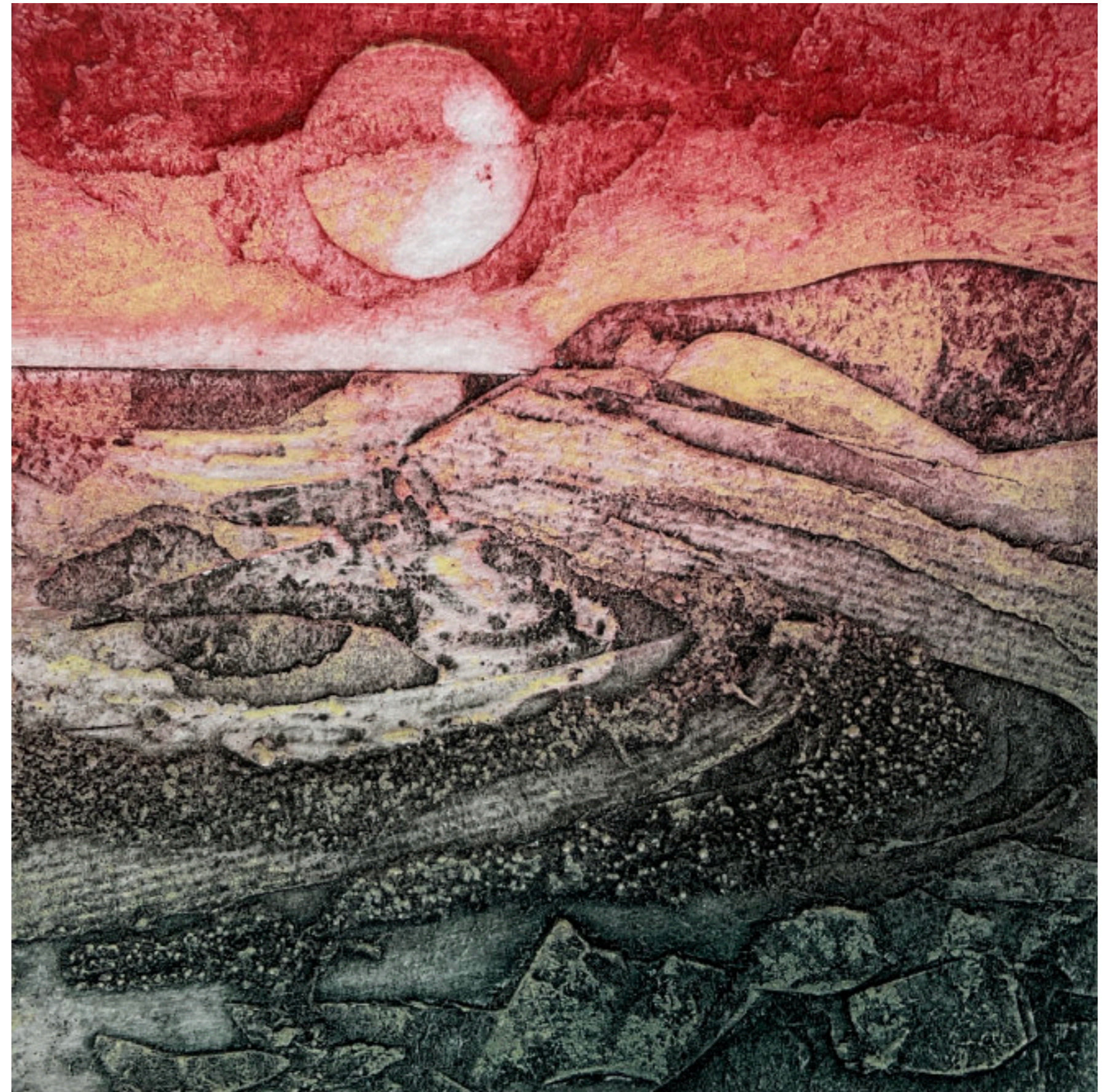
Sarah Ross-Thompson
Craggs
Collagraph, 24 x 24 cm, edition 2/30
£50 Mounted



Sarah Ross-Thompson
A Family Affair
Collagraph, 40 x 40cm, edition 18/30
£90 Mounted



Sarah Ross-Thompson
Crimson Coast
Collagraph, 24 x 24 cm, edition 29/30
£50 Mounted



Sarah Ross-Thompson
Ever Hopeful
Collagraph, 40 x 40cm, edition 2/30
£110 Mounted



Sarah Ross-Thompson
In the Mirror
Collagraph, 24 x 24 cm, edition 5/30
£50 Mounted



Sarah Ross-Thompson
Looking East
Collagraph, 24 x 24 cm, edition 25/30
£50 Mounted



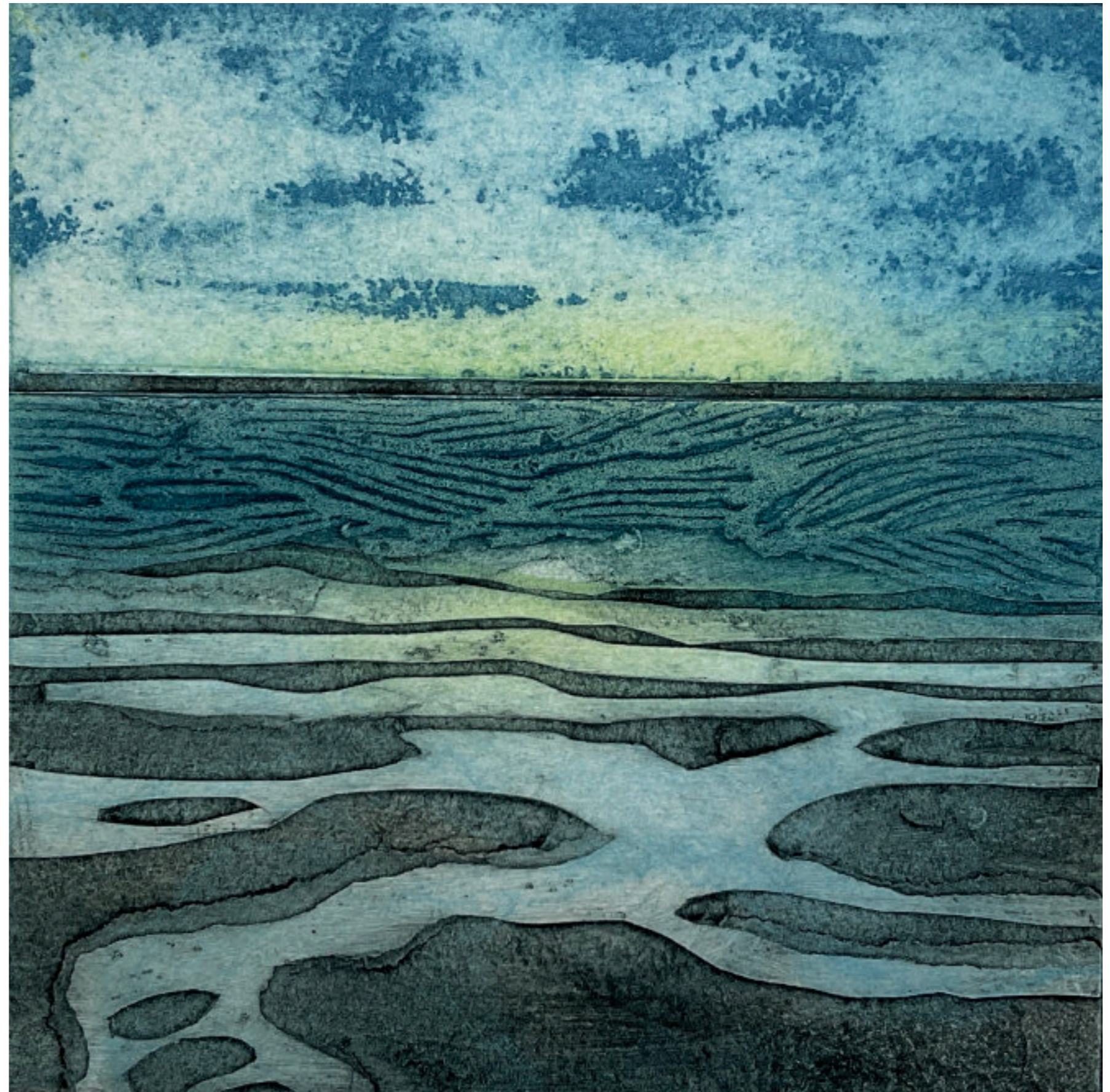
Sarah Ross-Thompson
Craggs
Collagraph, 24 x 24 cm, edition 2/30
£50 Mounted



Sarah Ross-Thompson
End of the Day
Collagraph, 40 x 40 cm, edition 10/30
£110 Mounted



Sarah Ross-Thompson
Ebbing
Collagraph, 40 x 40cm, edition 19/30
£110 Mounted SOLD



Sarah Ross-Thompson
The Curious Curlew
Collagraph, 40 x 40cm, edition 16/30
£110 Mounted



Sarah Ross-Thompson
Spread Your Wings
Collagraph, 40 x 40cm, edition 9/30
£110 Mounted



Sarah Ross-Thompson
Blushing Tide
Collagraph, 40 x 40cm, edition 10/30
£110 Mounted



Sarah Ross-Thompson
Honeycomb Coast
Collagraph on paper, 40 x 40cm, Edition 2/30
£110 Mounted



For any more information, or to purchase any of these works,
please visit our website www.gallagherandturner.co.uk

Gallagher & Turner
30 St Mary's Place
Newcastle upon Tyne
NE1 7PQ

gallery@gallagherandturner.co.uk

0191 261 4465

Works are available to purchase via our website, but we
recommend seeing and/or collecting them in person where
possible

GALLAGHER & TURNER

30 St Mary's Place, Newcastle-upon-Tyne, NE1 7PQ
0191 261 4465 gallery@gallagherandturner.co.uk www.gallagherandturner.co.uk