



MELVYN EVANS

THE POWER OF PLACE

2ND JULY - 15TH AUGUST 2020

GALLAGHER & TURNER

30 St Mary's Place, Newcastle-upon-Tyne, NE1 7PQ
0191 261 4465 gallery@gallagherandturner.co.uk www.gallagherandturner.co.uk



Boats, Church and Lighthouse

Linocut print, edition of 60
40 x 50 cm (image)

£340



Leaving Harbour

Linocut print, edition of 60
40 x 50 cm (image)

£340



Formed by the Wind

Linocut print, edition of 60
40 x 50 cm (image)

£340



Forms in the Landscape

Linocut print, edition of 60
40 x 50 cm (image)

£340



The Echo of Landscape

Linocut print, edition of 60
40 x 50 cm (image)

£340



Three Sentinels

Linocut print, edition of 60
40 x 50 cm (image)

£340



Moon and Sun Landscape

Linocut print, edition of 60
40 x 50 cm (image)

£340



Ancient Head Form II

Linocut print, edition of 60
40 x 50 cm (image)

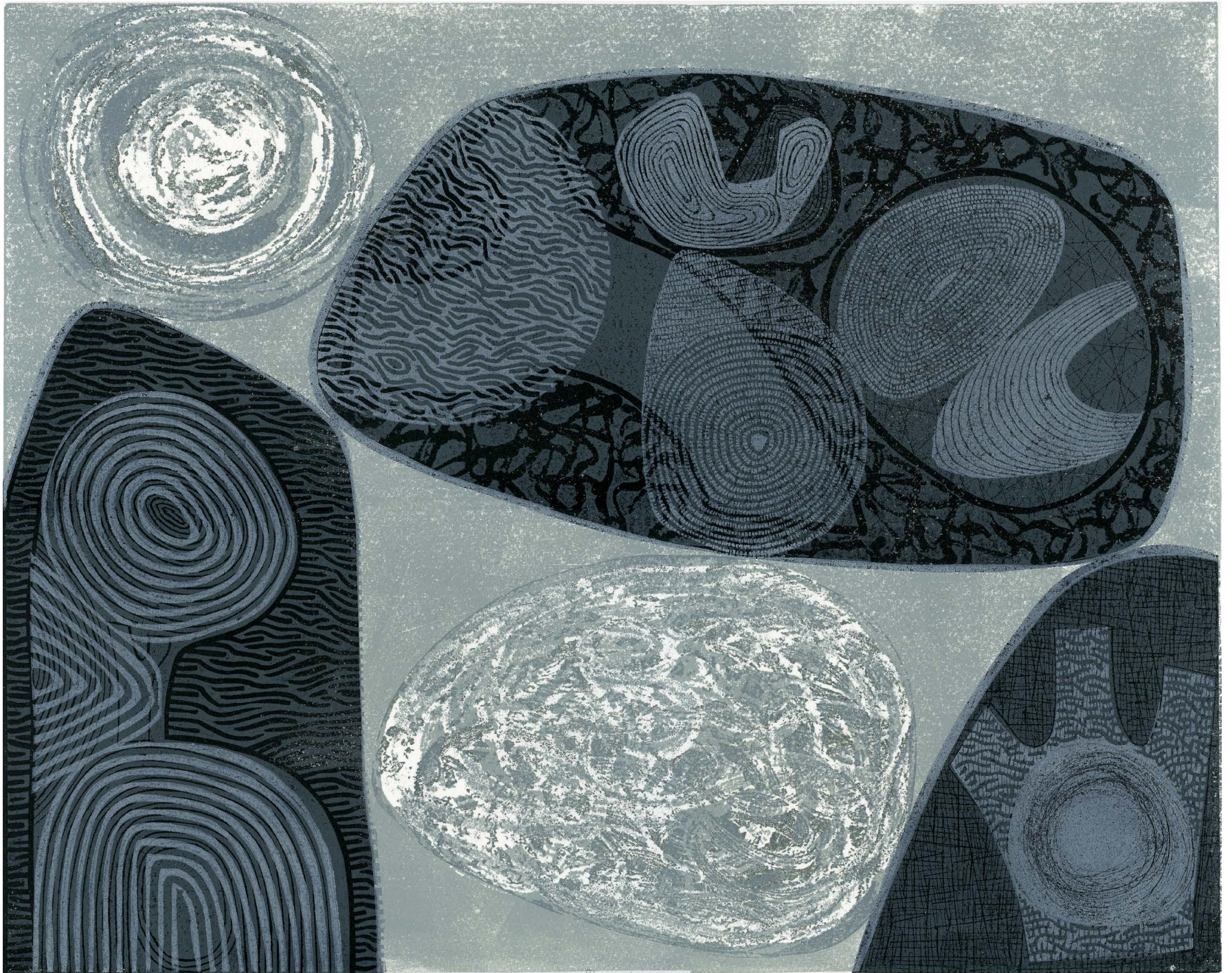
£340



Ancient Head Form III

Linocut print, edition of 60
40 x 50 cm (image)

£340



Stones by Moonlight

Linocut print, edition of 60
40 x 50 cm (image)

£340



Border Trees

Linocut print, edition of 60
40 x 50 cm (image)

£340



Stone Forest

Linocut print, edition of 60
40 x 50 cm (image)

£340



Fish on the Quay

Linocut print, edition of 60
40 x 50 cm (image)

£340



Lost Land

Linocut print, edition of 60
40 x 50 cm (image)

£340



A Busy Harbour

Linocut print, edition of 60
40 x 50 cm (image)

£340



Casting Off

Linocut print, edition of 60
40 x 50 cm (image)

£340



Passing the Stack Rock

Linocut print, edition of 60
40 x 50 cm (image)

£340



Soul of the Landscape

Oil on canvas board
40 x 50 cm

£1,290



Stones and Hills

Oil on canvas board
40 x 50 cm

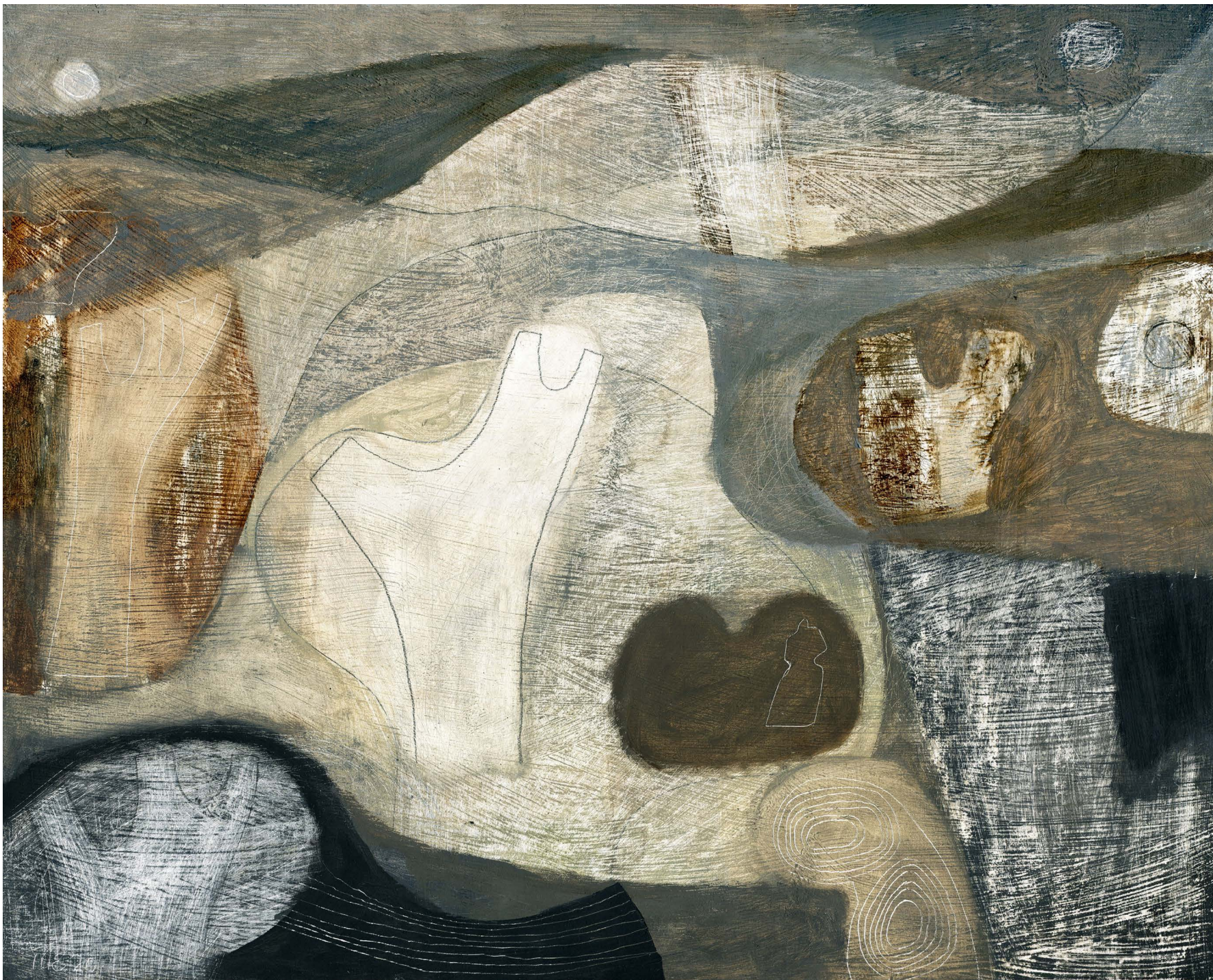
£1,290



Sun and Moon Boats

Oil on canvas board
40 x 50 cm

£1,290



White Hills

Oil on canvas board
40 x 50 cm

£1,290



Landscape Drawing 17

Charcoal, graphite and pastel pencil on paper
12 x 14 cm (Image)

£390



Landscape Drawing 18

Charcoal, graphite and pastel pencil on paper
12 x 14 cm (Image)

£390



Landscape Drawing 19

Charcoal, graphite and pastel pencil on paper
12 x 14 cm (Image)

£390



Landscape Drawing 20

Charcoal, graphite and pastel pencil on paper
12 x 14 cm (Image)

£390



Landscape Drawing 21

Charcoal, graphite and pastel pencil on paper
12 x 14 cm (Image)

£390



The works in this exhibition are available to buy through Own Art.

Own Art allows you to spread the cost of buying great contemporary art over ten monthly payments with an interest-free loan (0% APR Representative).

Payments can start from as little as £10 per month, and is available on works up to the value of £25,000. Own Art can be used to purchase a single work, or multiple pieces by any living artists.

For more information, visit www.ownart.org.uk/
or contact us on 0191 261 4465 / gallery@gallagherandturner.co.uk

All print and drawings are sold with bespoke frames.

For any more information, or to purchase any of these works,
please don't hesitate to contact us

Gallagher & Turner
30 St Mary's Place
Newcastle upon Tyne
NE1 7PQ

gallery@gallagherandturner.co.uk

0191 261 4465

www.gallagherandturner.co.uk

Works are available to purchase via our website, but we recommend seeing and/or
collecting them in person where possible.

GALLAGHER & TURNER

30 St Mary's Place, Newcastle-upon-Tyne, NE1 7PQ
0191 261 4465 gallery@gallagherandturner.co.uk www.gallagherandturner.co.uk